

# Reversible Ratchet Wrench Assembly

## ZRWA

ZATHR375



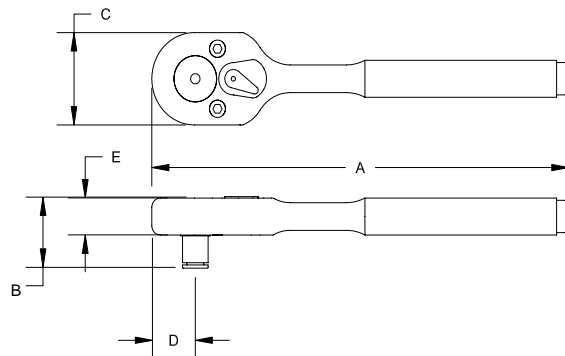
ZATHR250

**Zephyr's Ratchet Wrench Assemblies** are ideal for the installation of any frangible hex collar fastener system such as Hi-Lok, Hi-Lite, Hi-Tigue, Veri-Lite and C-Lok. The ZATHR series ratchet has 72 teeth offering minimum handle swing for close quarter applications. The assembly consists of a 1/4" or 3/8" square drive reversible ratchet wrench with a through hole, a socket with a set screw and hex key with either a plastic screwdriver handle or a "T" handle. All the components listed below are completely interchangeable and can be ordered as an assembly or separately.

**How to select a tool:** From the parts list below determine the ratchet wrench 1/4" or 3/8" square drive, then select the appropriate socket hex and the hex key sizes that match the fastener pin and collar. Example:

ZRWA25-37-6 Includes:

- ZATHR250 1/4" SQ Drive Ratchet Wrench
- ZRWS25-37 3/8" Drive Hex Socket
- ZRWK-6 5/64" Hex Key with Handle



| Socket Hex Size | Hex Key Size | Complete Tool Part Number | Ratchet Wrench Part Number | Socket Part Number | Hex Key Part Number |          |        |          |        |       | Handle Swing |
|-----------------|--------------|---------------------------|----------------------------|--------------------|---------------------|----------|--------|----------|--------|-------|--------------|
|                 |              |                           |                            |                    |                     | A        | B      | C        | D      | E     |              |
| 3/16            | 1/16"        | ZRWA25-18-5               | ZATHR250<br>1/4" SQ Drive  | ZRWS25-18          | ZRWK-5P             | 5 11/32" | 13/16" | 1 1/16"  | 17/32" | 7/16" | 4 Degrees    |
| 7/32            |              | ZRWA25-22-5               |                            | ZRWS25-22          |                     |          |        |          |        |       |              |
| 1/4             |              | ZRWA25-25-5               |                            | ZRWS25-25          |                     |          |        |          |        |       |              |
| 9/32            |              | ZRWA25-28-5               |                            | ZRWS25-28          |                     |          |        |          |        |       |              |
| 5/16            |              | ZRWA25-31-5               |                            | ZRWS25-31          |                     |          |        |          |        |       |              |
| 11/32           |              | ZRWA25-34-5               |                            | ZRWS25-34          |                     |          |        |          |        |       |              |
| 7/32            | 5/64"        | ZRWA25-22-6               | ZATHR250<br>1/4" SQ Drive  | ZRWS25-22          | ZRWK-6P             | 5 11/32" | 13/16" | 1 1/16"  | 17/32" | 7/16" | 4 Degrees    |
| 1/4             |              | ZRWA25-25-6               |                            | ZRWS25-25          |                     |          |        |          |        |       |              |
| 9/32            |              | ZRWA25-28-6               |                            | ZRWS25-28          |                     |          |        |          |        |       |              |
| 5/16            |              | ZRWA25-31-6               |                            | ZRWS25-31          |                     |          |        |          |        |       |              |
| 11/32           |              | ZRWA25-34-6               |                            | ZRWS25-34          |                     |          |        |          |        |       |              |
| 3/8             |              | ZRWA25-37-6               |                            | ZRWS25-37          |                     |          |        |          |        |       |              |
| 3/8             |              | ZRWA37-37-6               | ZATHR375                   | ZRWS37-37          |                     | 7 27/32" | 1 1/8" | 1 13/32" | 23/32" | 1/2"  | 5 Degrees    |
| 5/16            | 3/32"        | ZRWA25-31-8               | ZATHR250<br>1/4" SQ Drive  | ZRWS25-31          | ZRWK-8P             | 5 11/32" | 13/16" | 1 1/16"  | 17/32" | 7/16" | 4 Degrees    |
| 11/32           |              | ZRWA25-34-8               |                            | ZRWS25-34          |                     |          |        |          |        |       |              |
| 3/8             |              | ZRWA25-37-8               |                            | ZRWS25-37          |                     |          |        |          |        |       |              |
| 3/8             | 3/32"        | ZRWA37-37-8               | ZATHR375<br>3/8" SQ Drive  | ZRWS37-37          | ZRWK-8T             | 7 27/32" | 1 1/8" | 1 13/32" | 23/32" | 1/2"  | 5 Degrees    |
| 7/16            |              | ZRWA37-43-8               |                            | ZRWS37-43          |                     |          |        |          |        |       |              |
| 1/2             |              | ZRWA37-50-8               |                            | ZRWS37-50          |                     |          |        |          |        |       |              |
| 3/8             | 1/8"         | ZRWA37-37-10              | ZATHR375<br>3/8" SQ Drive  | ZRWS37-37          | ZRWK-10T            | 7 27/32" | 1 1/8" | 1 13/32" | 23/32" | 1/2"  | 5 Degrees    |
| 7/16            |              | ZRWA37-43-10              |                            | ZRWS37-43          |                     |          |        |          |        |       |              |
| 1/2             |              | ZRWA37-50-10              |                            | ZRWS37-50          |                     |          |        |          |        |       |              |
| 7/16            | 5/32"        | ZRWA37-43-12              | ZATHR375<br>3/8" SQ Drive  | ZRWS37-43          | ZRWK-12T            | 7 27/32" | 1 1/8" | 1 13/32" | 23/32" | 1/2"  | 5 Degrees    |
| 1/2             |              | ZRWA37-50-12              |                            | ZRWS37-50          |                     |          |        |          |        |       |              |

ZATHR250 maximum torque rating is 500 in lbs.

# Roller Drive Wrench Assembly

## ZRDA80



ZRDA80-31

ZRDW80S-250

**Zephyr's Roller Drive Wrench Assemblies** are ideal for the installation of any frangible hex collar fastener system such as Hi-Lok<sup>®</sup>, Hi-Lite<sup>®</sup>, Hi-Tigue<sup>®</sup>, Veri-Lite<sup>®</sup> and C-Lok<sup>®</sup> and the removal of any hex nut or hex collar in the most difficult close quarter applications.

Features

- One piece hot forged handle construction for maximum strength.
- Bright yellow knurled handle for easy visibility reducing chance of FOD.
- Minimum edge and height clearance plus a minimum handle swing angle allows easy access to those most restricted close quarters applications.
- The 1/4" square drive spindle and all ZRDS sockets feature a through hole for those applications that require the use of a hex keys.
- The ZRDW roller drive wrench also accepts all standard 1/4" square drive sockets.

All the components listed below are completely interchangeable and can be ordered separately or as an assembly.

**How to select a tool:** To order a complete assembly select the roller drive wrench 6.0" or 3.0" length from the parts list to the right. Then select the appropriate ZRDS socket hex that match the collar or nut hex. Example:

ZRDA80-31 Includes:

- ZRDW80 Roller Drive Wrench 6.0" OAL
- ZRDS-31 5/16" Drive Hex Socket

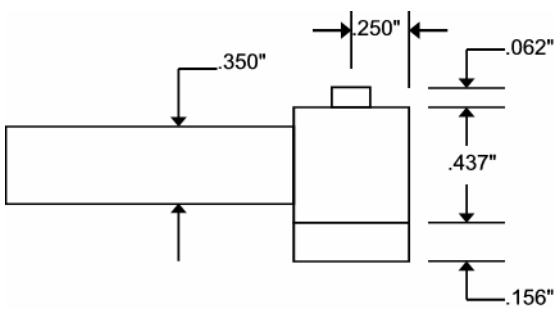
To order the Roller Drive Wrench equipped with a 1/4" square drive the part numbers are:

ZRDW80S-250    3.0" Handle  
 ZRDW80-250    6.0" Handle

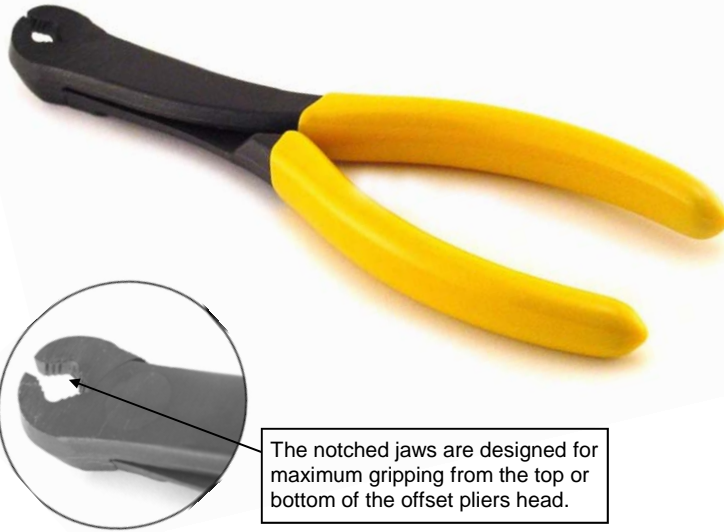
| Socket Hex Size | Complete Tool Part Number | Roller Drive Wrench Part Number | Socket Part Number |
|-----------------|---------------------------|---------------------------------|--------------------|
| 3/16            | ZRDA80-18S                | ZRDW80S<br>80 in lbs<br>3" OAL  | ZRDS-18            |
| 7/32            | ZRDA80-22S                |                                 | ZRDS-22            |
| 1/4             | ZRDA80-25S                |                                 | ZRDS-25            |
| 9/32            | ZRDA80-28S                |                                 | ZRDS-28            |
| 5/16            | ZRDA80-31S                |                                 | ZRDS-31            |
| 11/32           | ZRDA80-34S                |                                 | ZRDS-34            |
| 3/8             | ZRDA80-37S                |                                 | ZRDS-37            |
| 7/16            | ZRDA80-43S                | ZRDS-43                         |                    |
| 3/16            | ZRDA80-18                 | ZRDW80<br>80 in lbs<br>6" OAL   | ZRDS-18            |
| 7/32            | ZRDA80-22                 |                                 | ZRDS-22            |
| 1/4             | ZRDA80-25                 |                                 | ZRDS-25            |
| 9/32            | ZRDA80-28                 |                                 | ZRDS-28            |
| 5/16            | ZRDA80-31                 |                                 | ZRDS-31            |
| 11/32           | ZRDA80-34                 |                                 | ZRDS-34            |
| 3/8             | ZRDA80-37                 |                                 | ZRDS-37            |
| 7/16            | ZRDA80-43                 | ZRDS-43                         |                    |

Caution: Maximum torque rating is 100 in lbs.

For higher torque requirements use our ZATHR250, 1/4" square drive ratchet wrench with a maximum torque rating of 500 in lbs.



**ZHP-100** **ZEPHYR**<sup>®</sup>  
**TOOL**  
**HI-LOK**<sup>®</sup> **PLIERS**



The notched jaws are designed for maximum gripping from the top or bottom of the offset pliers head.

**ZEPHYR Hi-Lok**<sup>®</sup> **Removal Pliers** offer a quick and inexpensive alternative for removing any frangible hex collar such as Hi-Lok, Hi-Lite, Hi-Tigue, Veri-Lite and C-Lok fasteners. The hardened steel jaws are specially designed to maximize the gripping surface around the collar. This allows the ZHP-100 pliers to grip 5/32", 3/16", 1/4" and 5/16" fastener sizes.

For non-interference fit holes, the ZHP-100 removal pliers should be used in conjunction with a hex key such as ZEPHYR's ZRWK series plastic or T-handle hex wrench's.

**QRS**<sup>®</sup> **Ratchet Wrench Assembly**  
**QHRA**



To Order:

1. Determine the socket hex and the socket length.
2. Determine the size of the hex tip.

Example: **QHRA-22-10-5**

- 7/32" socket
- 1.0" extended socket with QRS<sup>®</sup> system
- QRK-5 Hex Tip

| (E)<br>Socket Length |
|----------------------|
| 4 = 0.25"            |
| 5 = 0.50"            |
| 10 = 1.00"           |
| 15 = 1.50"           |
| 20 = 2.00"           |
| 30 = 3.00"           |

| Hex Tip | Socket Hex | Complete Part Number |
|---------|------------|----------------------|
|         | 7/32       | QHRA-22-(E)-5        |
| 1/16    | 1/4        | QHRA-25-(E)-5        |
| QRK-5   | 9/32       | QHRA-28-(E)-5        |
|         | 5/16       | QHRA-31-(E)-5        |
|         | 11/32      | QHRA-34-(E)-5        |
|         | 7/32       | QHRA-22-(E)-6        |
| 5/64    | 1/4        | QHRA-25-(E)-6        |
| QRK-6   | 9/32       | QHRA-28-(E)-6        |
|         | 5/16       | QHRA-31-(E)-6        |
|         | 11/32      | QHRA-34-(E)-6        |
|         | 3/8        | QHRA-37-(E)-6        |
|         | 5/16       | QHRA-31-(E)-8        |
| 3/32    | 11/32      | QHRA-34-(E)-8        |
| QRK-8   | 3/8        | QHRA-37-(E)-8        |
|         | 7/16       | QHRA-43-(E)-8        |

The **QRS**<sup>®</sup> Quick Release System is a quick and easy way to replace the QRK hex tip. QRS<sup>®</sup> eliminates the need for any external tools to replace a hex tip.