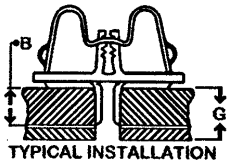
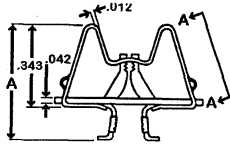


AVIAQUIP

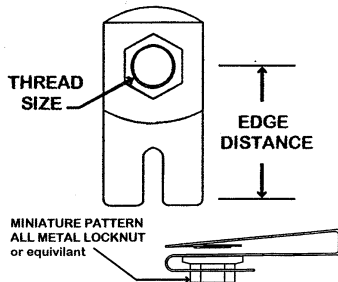
MS33737 INSTRUMENT NUTS



MS33737-(XX)	TINNERMAN NO.	OLD NAS NO.	"A"	"B"
MS33737-9C	A8938-632-493	NAS487-13	.438	.062
MS33737-10C	A8939-632-24J	NAS487-14	.469	.093
MS33737-11C	A6938-632-24J	NAS487-15	.500	.125
MS33737-12C	A8940-632-24J	NAS487-16	.562	.187
MS33737-13C	A8941-632-24J	NAS487-17	.625	.250
MS33737-14C	A8942-632-24J	NAS487-18	.688	.312
MS33737-15C	A8943-632-24J	NAS487-20	.750	.375
MS33737-16C	A8944-632-24J	NAS487-21	.750	.375+

CLIP NUTS

CLIP NUT CROSS REFERENCE - ESNA® - MONADNOCK® - SHURELOCK®
MATERIALS: CLIPS - CARBON STEEL, CAD PLATED - NUTS ALLOY STEEL, CAD PLATED



NOTE: A RANGE OF OTHER STYLES AND SIZES IS ALSO AVAILABLE ON REQUEST.

NUT CLIP SELECTION CHART

THREAD SIZE	NOMINAL EDGE DISTANCE	APPROXIMATE PANEL THICKNESS	ESNA RM52LHG#	MONADNOCK#	SHURELOCK#
	.281	.030-.062	A4972-5-62	294667	
	.500	.020-.160			SL213-06-1
	.250		A4972-4A-82	13080000-1	SL210-06-2
	.281		A4972-5A-82	13080000-2	
	.375		A4972-6-82	130008	SL211-08-1
	.500		A4972-8-82	130007	SL213-08-1
	.625		A4972-10-82	13080000-5	SL215-08-1
	.250		A4972-4-73	13100000-1	SL210-3-2
	.281		A4972-5-3	13100000-2	
	.375		A4972-6-02	130009	SL211-3-1
	.500		A4972-8-02	13100000-4	SL213-3-1
	.625		A4972-10-02	130062	SL215-3-1
	.705		A4972-11-02	130068	
1/4-28	.500	.050-.125		13400000-1	

Product information and part numbers shown on these pages are not guaranteed correct by AVIAQUIP PTY. LTD and are subject to change without notice.