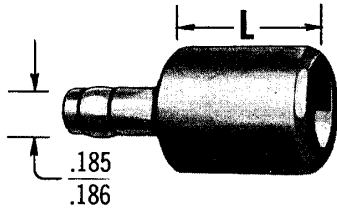


AVIAQUIP

RIVET SQUEEZER SETS

MM200 Cupped Squeezer Set

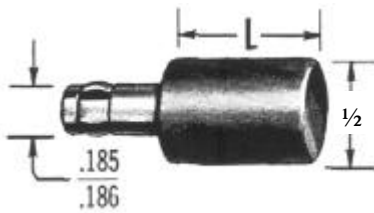


When ordering please specify rivet head style I.E. MS20470 (Universal Head), Cup size and part number

Tool Number	L - Length
MM200-1	1/8"
MM200-2	1/4"
MM200-3	3/8"
MM200-4	1/2"
MM200-5	5/8"

Tool Number	L - Length
MM200-6	3/4"
MM200-7	7/8"
MM200-8	1"
MM200-9	1-1/8"
MM200-10	1-1/4"

MM205 Flush Squeezer Set

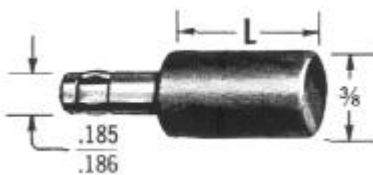


Please specify Part Number

Tool Number	L - Length
MM205-1	1/8"
MM205-2	1/4"
MM205-3	3/8"
MM205-4	1/2"
MM205-5	5/8"

Tool Number	L - Length
MM205-6	3/4"
MM205-7	7/8"
MM205-8	1"
MM205-9	1-1/8"
MM205-10	1-1/4"

MM206 Flush Squeezer Set (Narrow)

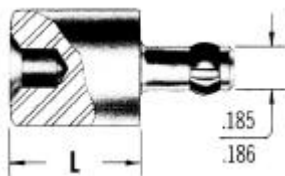


Please specify Part Number

Tool Number	L - Length
MM206-1	1/8"
MM206-2	1/4"
MM206-3	3/8"

Tool Number	L - Length
MM206-4	1/2"
MM206-5	5/8"
MM206-6	3/4"

MM210 Dimple Die (For cold dimpling Aluminium Alloys)

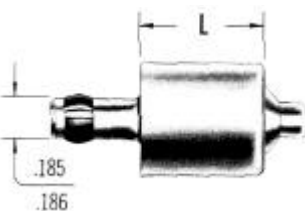


MM210 Dies are used in conjunction with MM220 dimple punches to cold work aluminium alloy materials.

Please specify part number and body length when ordering

Tool Number	Fastener Type	Fastener Size	L - Body Lengths
MM210-1	MS20426 Rivet	1/16"	1/4" - 3/8" - 1/2" - 5/8" - 3/4" - 7/8" - 1" - 1-1/4"
MM210-2		3/32"	1/4" - 3/8" - 1/2" - 5/8" - 3/4" - 7/8" - 1" - 1-1/4"
MM210-3		1/8"	3/8" - 1/2" - 5/8" - 3/4" - 7/8" - 1" - 1-1/4"
MM210-4		5/32"	3/8" - 1/2" - 5/8" - 3/4" - 7/8" - 1" - 1-1/4"
MM210-5		3/16"	1/2" - 5/8" - 3/4" - 7/8" - 1" - 1-1/4"
MM210-6		1/4"	5/8" - 3/4" - 7/8" - 1" - 1-1/4"
MM210-7	MS24693 Screw	6-32	1/4" - 3/8" - 1/2" - 5/8" - 3/4" - 7/8" - 1" - 1-1/4"
MM210-8		8-32	3/8" - 1/2" - 5/8" - 3/4" - 7/8" - 1" - 1-1/4"
MM210-9		10-32	3/8" - 1/2" - 5/8" - 3/4" - 7/8" - 1" - 1-1/4"
MM210-10		1/4-28	1/2" - 5/8" - 3/4" - 7/8" - 1" - 1-1/4"

MM220 Dimple Punches (Mates with MM-210 above)



Please use MM210 Chart above substituting MM220 - ()
Body lengths from 1/4" thru 1 1/4" are available for all second dash numbers for MM220.

Please specify Part Number and body lengths when ordering.

Product information and part numbers shown on these pages are not guaranteed correct by AVIAQUIP PTY. LTD and are subject to change without notice.

AVIAQUIP

MARTIN MM202 Squeezer Set Shank Retainer



Tool Number	Shank Size	Tool Number	Shank Size
MM202-11	3/16"	MM202-14	3/8"
MM202-12	1/4"	MM202-15	5/8"
MM202-13	5/16"	MM202-16	3/4"

MARTIN MM201 Spring Loaded Rivet Set



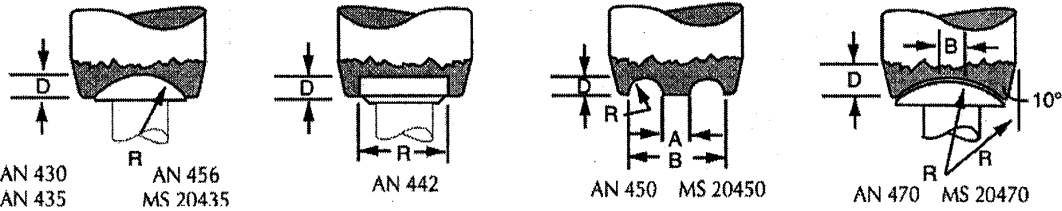
Tool Number	S	A	B
MM201-1	3/16"	3/8"	9/16"
MM201-2	1/4"	3/8"	9/16"
MM201-3	3/16"	19/64"	1/2"
MM201-4	1/4"	19/64"	1/2"



Rivet Set Cupping Standards for AN and MS Rivets

Rivet set cups are machined to a larger radius than the maximum rivet head radius and are shallower in cup depth than the minimum head thickness:

- To allow for a slight upsetting of the head in forming the upset end.
- To allow for the slight misalignment in holding the set on the rivet head without touching the riveted surface.



RIVET NUMBER	RIVET TYPE		RIVET SIZE							
			1/16"	3/32"	1/8"	5/32"	3/16"	1/4"	5/16"	3/8"
AN430	ROUND HEAD	R	.075	.112	.161	.184	.222	.298	.369	
		D	.031	.049	.068	.086	.104	.139	.162	
AN435	BUTTON HEAD	R	.061	.095	.128	.160	.192	.256	.321	
		D	.040	.063	.084	.105	.126	.168	.206	
AN442	FLAT HEAD	R	.141	.204	.267	.333	.399	.530	.661	
		D	.014	.022	.032	.042	.052	.072	.092	
AN456	BRAZIER HEAD	R	--	.142	.213	.284	.354	.415	.567	
		D	--	.018	.030	.047	.057	.069	.094	
AN470 MS20470 MS20613 MS20615 AN125401 THROUGH AN125700	UNIVERSAL HEAD	B	.041	.056	.072	.088	.103	.135	.166	
		D	.019	.027	.040	.049	.057	.077	.100	
		R	.070	.098	.124	.152	.180	.233	.288	
		R _i	.054	.082	.108	.135	.164	.217	.272	
AN450 MS20450	THOMPSON HEAD (TUBULAR)		1/16"	3/32"	#40	1/8"	9/64"	3/16"	1/4"	
		A	.033	.055	.069	.082	.094	.130	.170	
		B	.110	.158	.160	.205	.258	.294	.366	
		R	.019	.026	.023	.031	.041	.041	.049	
	D	.014	.021	.023	.031	.041	.041	.045		
MS20470	MODIFIED		SEE MODIFIED RIVET SETS							

Product information and part numbers shown on these pages are not guaranteed correct by AVIAQUIP PTY. LTD and are subject to change without notice.