

BLIND RIVETS

OLYMPIC-LOK[®] BLIND RIVETS

NAS 1400 Procurement Specification
NAS 1398 & NAS 1399 "A" Coded Parts

OLYMPIC BULB-LOK[®] BLIND RIVETS

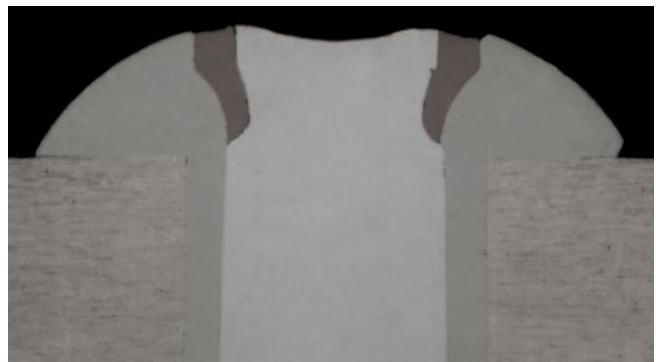
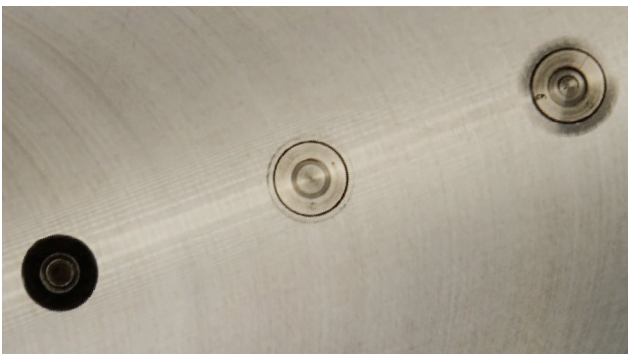
NAS 1740 Procurement Specification
NAS 1768 & 1769 Parts

BENEFITS

- COST-EFFECTIVE** - Lowest installed cost due to fast cycling, versatile Tooling System... Limited access is no longer a problem.
- EXCELLENT CLAMP-UP** - Sheet take-up capability is excellent, minimizing the need for temporary fasteners.
- HIGH STRENGTH** - Positive hole-fill capability provides highest joint yield strength.
- VIBRATION-RESISTANT** - Locking collar provides secure mechanical lock permitting usage in areas of FOD concern, such as Engine Inlet Ducts.

LOCK RING INTEGRITY

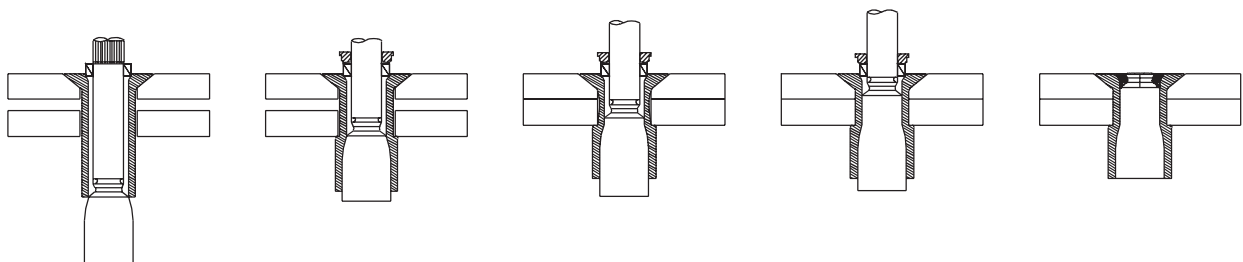
The OLYMPIC Tooling System incorporates a special insert in the nose-piece which drives the locking collar to fully pack the cavity.
Shaving of the rivet head achieves aerodynamic smoothness.



NON-SHIFT TOOLING SYSTEM

Single stroke action tools, no adjustments, one pulling head for all head configurations, light weight, compact, and sturdy.

TYPICAL OLYMPIC-LOK[®] & BULB-LOK[®] INSTALLATION SEQUENCE



OLYMPIC-LOK[®] blind rivet is inserted into a prepared hole. Note the clearance between the rivet and the sides of the hole and the gap between the sheets.
Tool jaws grip the stem and pull it into the sleeve, closing the sheet gap, expanding the sleeve to fill the hole, and forming a consistently larger blind-side bearing area.

When the stem travel is completed, the stem locking groove is aligned with the sleeve cavity. The locking collar is then driven, securely locking sleeve and stem components together.

Continued pulling breaks the stem flush to the fastener head. Flushness is assured by the positioning of the break-groove.